



**RDL**<sup>®</sup>  
Radio Design Labs

SPECIALISTS IN PRACTICAL PRECISION ENGINEERING™

FOR IMMEDIATE RELEASE

PR2011-4

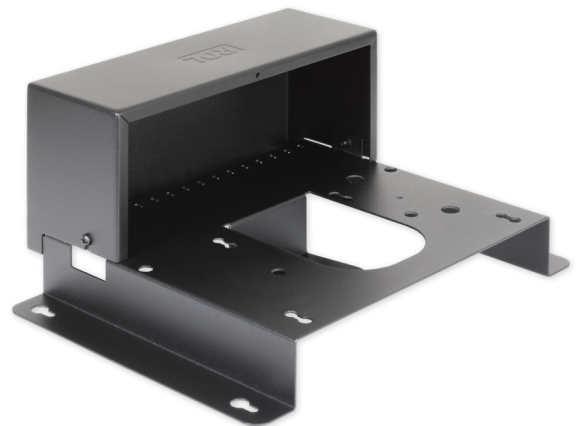
## RDL Introduces Wall Mount Brackets for HD Series Amplifiers

**November 21, 2011** - RDL is excited to announce that two new mounting brackets for the popular HD Series Amplifiers are now shipping. The HD-WM1 and HD-WM2 are wall mount brackets that mount an HD Series audio power amplifier and its power supply to a wall or other flat surface. The brackets are constructed of steel with a durable black powder coat finish. The interior of the brackets hold the power supply with space to conceal excess wire length for a professional installation. Special tabs are provided to firmly secure the wiring connected to the HD product. The included security cover slides easily into place to protect the HD product rear-panel connections and adjustments.



### HD-WM1

Compatibility: HD-MA35U, HD-MA35UA, HD-RA35U, HD-RA35UA, HD-PA35U, HD-PA35UA



### HD-WM2

Compatibility: HD-MA35, HD-MA35A, HD-PA35, HD-PA35A

For more information visit [www.rdlnet.com](http://www.rdlnet.com) or contact RDL Sales at 1-800-281-2683.

High Resolution Images:

[Click Here to Download](#)

[www.rdlnet.com](http://www.rdlnet.com)

RDL • 659 N. 6th Street, Prescott, AZ USA 86301 • (928) 778-9678 • Fax: (928) 778-9430 • <http://rdlnet.com>  
Sales (928) 443-9391 • (800) 281-2683 • Fax: (928) 443-9392 • [sales@rdlnet.com](mailto:sales@rdlnet.com) • [exportsales@rdlnet.com](mailto:exportsales@rdlnet.com) • Technical Support (928) 778-3554 • (800) 933-1780 • Fax: (928) 778-3506 • [service@rdlnet.com](mailto:service@rdlnet.com)

RDL EUROPE, BV • Banking: INGBNL2A • Account 68.21.13.107 • VAT nr: NL 99.30.553.B01 • Chamber of Commerce: Amsterdam 25746  
Sales and Service • Gebouw Y-Tech, Van Diemenstraat 36, 1013 NH Amsterdam, The Netherlands • (+31) 20-6238 983 • Fax: (+31) 20-6225 287 • [eurosales@rdlnet.com](mailto:eurosales@rdlnet.com) • [eurotech@rdlnet.com](mailto:eurotech@rdlnet.com)